

The Practice Room

Learn to Sight Sing.

Dictation Workbook

Templates for: Rhythmic Dictation Melodic Dictation

The image displays two musical exercises in 4/4 time, each consisting of a treble and bass staff. The first exercise is marked *mp* and contains four measures. The second exercise is marked *mf* and contains four measures. Each measure is numbered from 1 to 4.

Exercise 1 (*mp*):

- Measure 1: Treble clef, G4 quarter, A4 quarter, B4 quarter, C5 quarter. Bass clef, G3 quarter, F3 quarter, E3 quarter, D3 quarter.
- Measure 2: Treble clef, D4 quarter, E4 quarter, F4 quarter, G4 quarter. Bass clef, C3 quarter, B2 quarter, A2 quarter, G2 quarter.
- Measure 3: Treble clef, A4 quarter, B4 quarter, C5 quarter, B4 quarter. Bass clef, F3 quarter, E3 quarter, D3 quarter, C3 quarter.
- Measure 4: Treble clef, A4 quarter, B4 quarter, C5 quarter, B4 quarter. Bass clef, D3 quarter, E3 quarter, F3 quarter, G3 quarter.

Exercise 2 (*mf*):

- Measure 5: Treble clef, G4 quarter, eighth notes (A4, B4, C5, B4, A4), G4 quarter. Bass clef, G3 quarter, eighth notes (F3, E3, D3, C3), G3 quarter.
- Measure 6: Treble clef, G4 quarter, eighth notes (A4, B4, C5, B4, A4), G4 quarter. Bass clef, G3 quarter, eighth notes (F3, E3, D3, C3), G3 quarter.
- Measure 7: Treble clef, G4 quarter, eighth notes (A4, B4, C5, B4, A4), G4 quarter. Bass clef, G3 quarter, eighth notes (F3, E3, D3, C3), G3 quarter.
- Measure 8: Treble clef, G4 quarter, eighth notes (A4, B4, C5, B4, A4), G4 quarter. Bass clef, G3 quarter, eighth notes (F3, E3, D3, C3), G3 quarter.

Dictation Template

Rhythmic Dictation

| | | | |
|--|--|--|--|
| | | | |
| | | | |
| | | | |
| | | | |

| | | | |
|--|--|--|--|
| | | | |
| | | | |
| | | | |
| | | | |

| | | | |
|--|--|--|--|
| | | | |
| | | | |
| | | | |
| | | | |



| | | | |
|--|--|--|--|
| | | | |
| | | | |
| | | | |
| | | | |

| | | | |
|--|--|--|--|
| | | | |
| | | | |
| | | | |
| | | | |



| | | | |
|--|--|--|--|
| | | | |
| | | | |
| | | | |
| | | | |

| | | | |
|--|--|--|--|
| | | | |
| | | | |
| | | | |
| | | | |

| | | | |
|--|--|--|--|
| | | | |
| | | | |
| | | | |
| | | | |

| | | | |
|--|--|--|--|
| | | | |
| | | | |
| | | | |
| | | | |



| | | | |
|--|--|--|--|
| | | | |
| | | | |
| | | | |
| | | | |

| | | | |
|--|--|--|--|
| | | | |
| | | | |
| | | | |
| | | | |



| | | | |
|--|--|--|--|
| | | | |
| | | | |
| | | | |
| | | | |

| | | | |
|--|--|--|--|
| | | | |
| | | | |
| | | | |
| | | | |

| | | | |
|--|--|--|--|
| | | | |
| | | | |
| | | | |
| | | | |

| | | | |
|--|--|--|--|
| | | | |
| | | | |
| | | | |
| | | | |



| | | | |
|--|--|--|--|
| | | | |
| | | | |
| | | | |
| | | | |

| | | | |
|--|--|--|--|
| | | | |
| | | | |
| | | | |
| | | | |



| | | | |
|--|--|--|--|
| | | | |
| | | | |
| | | | |
| | | | |

| | | | |
|--|--|--|--|
| | | | |
| | | | |
| | | | |
| | | | |

| | | | |
|--|--|--|--|
| | | | |
| | | | |
| | | | |
| | | | |

| | | | |
|--|--|--|--|
| | | | |
| | | | |
| | | | |
| | | | |



| | | | |
|--|--|--|--|
| | | | |
| | | | |
| | | | |
| | | | |

| | | | |
|--|--|--|--|
| | | | |
| | | | |
| | | | |
| | | | |



| | | | |
|--|--|--|--|
| | | | |
| | | | |
| | | | |
| | | | |

| | | | |
|--|--|--|--|
| | | | |
| | | | |
| | | | |
| | | | |

| | | | |
|--|--|--|--|
| | | | |
| | | | |
| | | | |
| | | | |

| | | | |
|--|--|--|--|
| | | | |
| | | | |
| | | | |
| | | | |



| | | | |
|--|--|--|--|
| | | | |
| | | | |
| | | | |
| | | | |

| | | | |
|--|--|--|--|
| | | | |
| | | | |
| | | | |
| | | | |



| | | | |
|--|--|--|--|
| | | | |
| | | | |
| | | | |
| | | | |

| | | | |
|--|--|--|--|
| | | | |
| | | | |
| | | | |
| | | | |

| | | | |
|--|--|--|--|
| | | | |
| | | | |
| | | | |
| | | | |

| | | | |
|--|--|--|--|
| | | | |
| | | | |
| | | | |
| | | | |



| | | | |
|--|--|--|--|
| | | | |
| | | | |
| | | | |
| | | | |

| | | | |
|--|--|--|--|
| | | | |
| | | | |
| | | | |
| | | | |



| | | | |
|--|--|--|--|
| | | | |
| | | | |
| | | | |
| | | | |

| | | | |
|--|--|--|--|
| | | | |
| | | | |
| | | | |
| | | | |

| | | | |
|--|--|--|--|
| | | | |
| | | | |
| | | | |
| | | | |

| | | | |
|--|--|--|--|
| | | | |
| | | | |
| | | | |
| | | | |



| | | | |
|--|--|--|--|
| | | | |
| | | | |
| | | | |
| | | | |

| | | | |
|--|--|--|--|
| | | | |
| | | | |
| | | | |
| | | | |



| | | | |
|--|--|--|--|
| | | | |
| | | | |
| | | | |
| | | | |

| | | | |
|--|--|--|--|
| | | | |
| | | | |
| | | | |
| | | | |

| | | | |
|--|--|--|--|
| | | | |
| | | | |
| | | | |
| | | | |

| | | | |
|--|--|--|--|
| | | | |
| | | | |
| | | | |
| | | | |



| | | | |
|--|--|--|--|
| | | | |
| | | | |
| | | | |
| | | | |

| | | | |
|--|--|--|--|
| | | | |
| | | | |
| | | | |
| | | | |



| | | | |
|--|--|--|--|
| | | | |
| | | | |
| | | | |
| | | | |

| | | | |
|--|--|--|--|
| | | | |
| | | | |
| | | | |
| | | | |

| | | | |
|--|--|--|--|
| | | | |
| | | | |
| | | | |
| | | | |

| | | | |
|--|--|--|--|
| | | | |
| | | | |
| | | | |
| | | | |



| | | | |
|--|--|--|--|
| | | | |
| | | | |
| | | | |
| | | | |

| | | | |
|--|--|--|--|
| | | | |
| | | | |
| | | | |
| | | | |



| | | | |
|--|--|--|--|
| | | | |
| | | | |
| | | | |
| | | | |

| | | | |
|--|--|--|--|
| | | | |
| | | | |
| | | | |
| | | | |

| | | | |
|--|--|--|--|
| | | | |
| | | | |
| | | | |
| | | | |

| | | | |
|--|--|--|--|
| | | | |
| | | | |
| | | | |
| | | | |



| | | | |
|--|--|--|--|
| | | | |
| | | | |
| | | | |
| | | | |

| | | | |
|--|--|--|--|
| | | | |
| | | | |
| | | | |
| | | | |

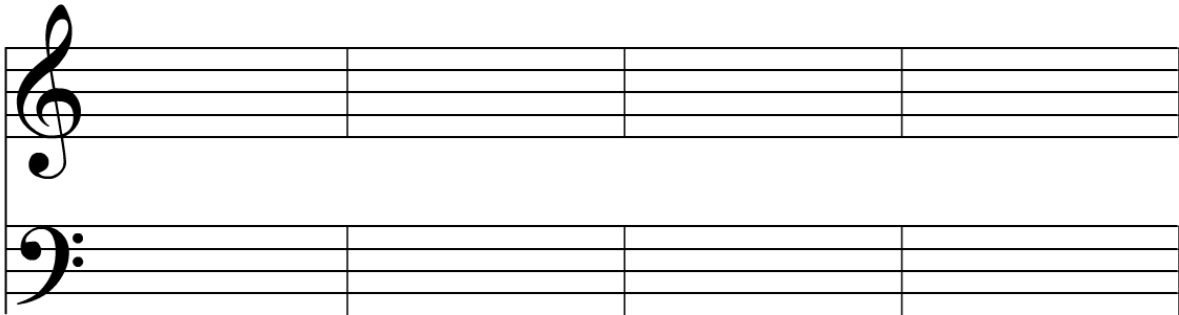


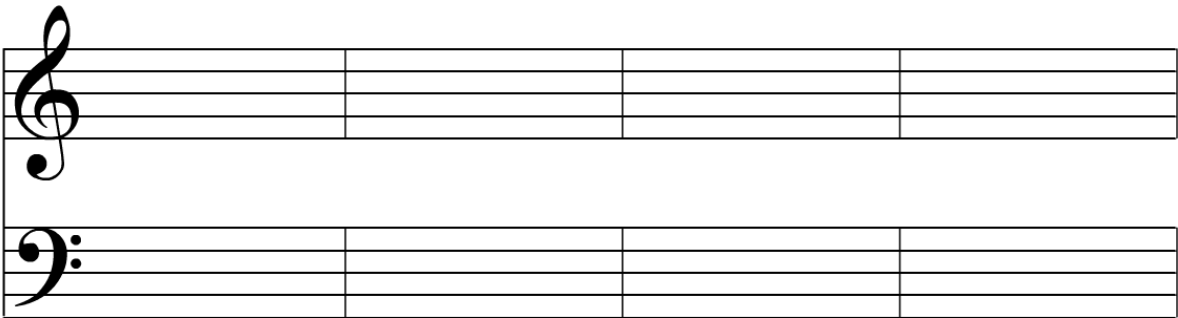
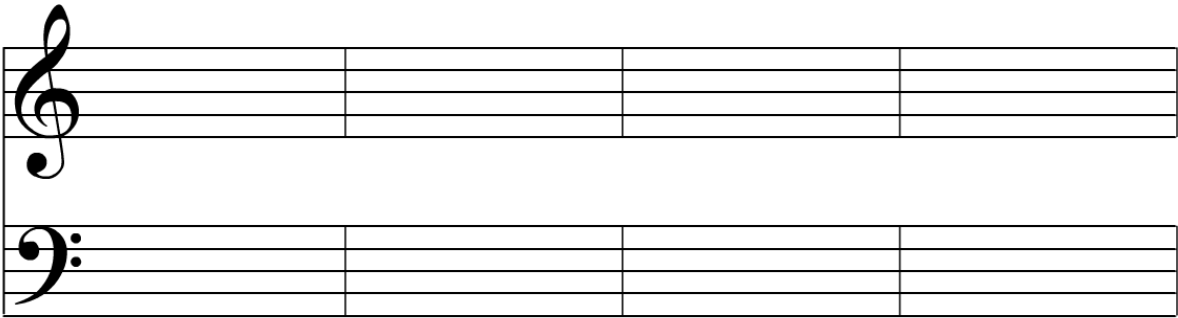
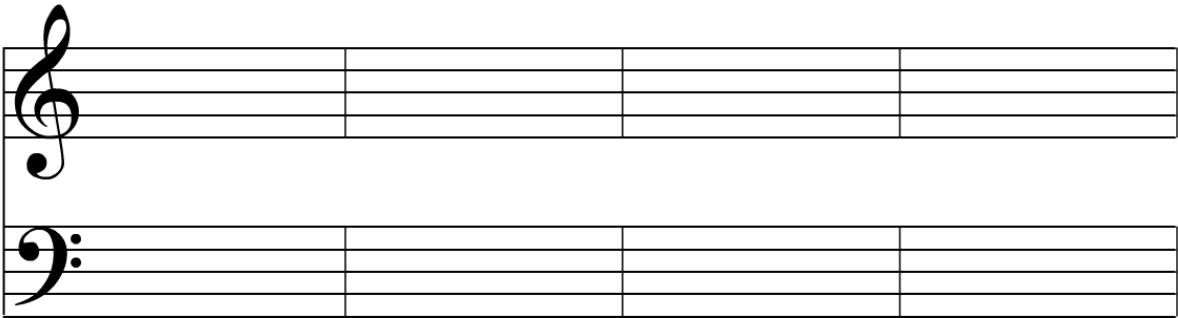
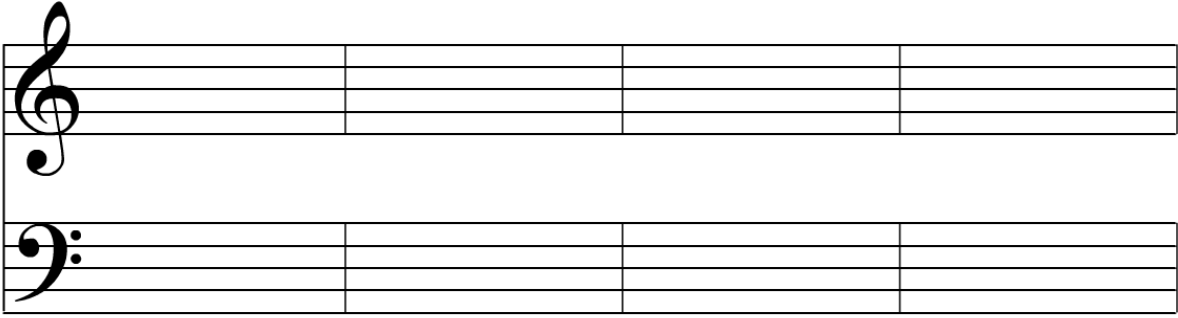
| | | | |
|--|--|--|--|
| | | | |
| | | | |
| | | | |
| | | | |

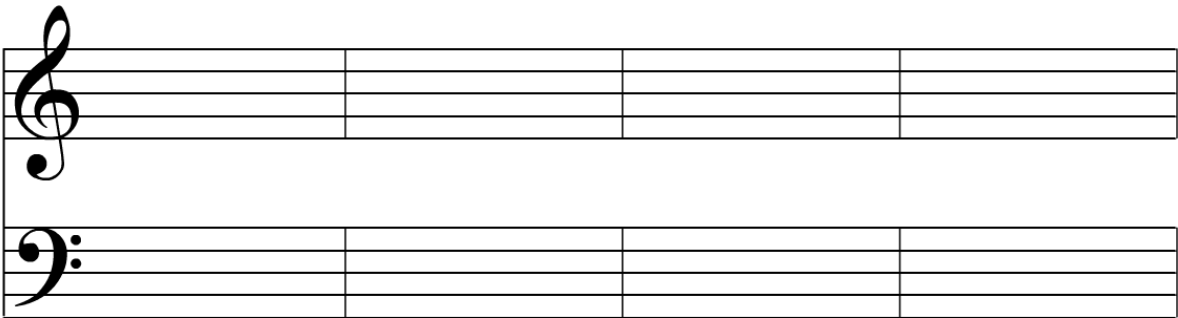
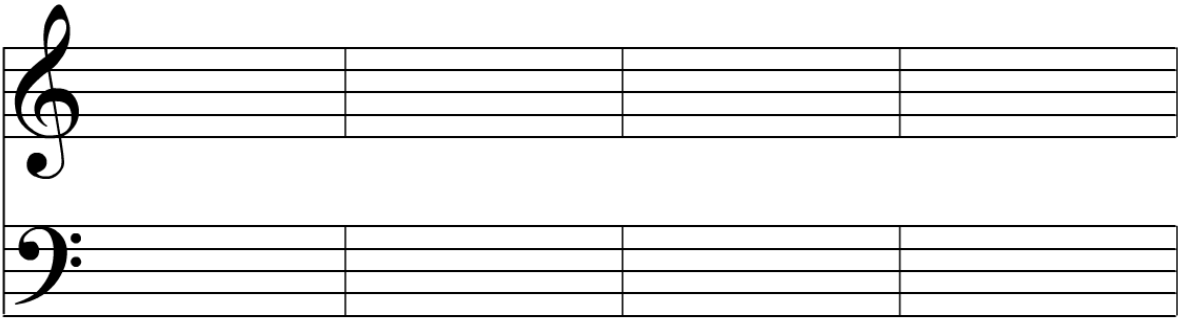
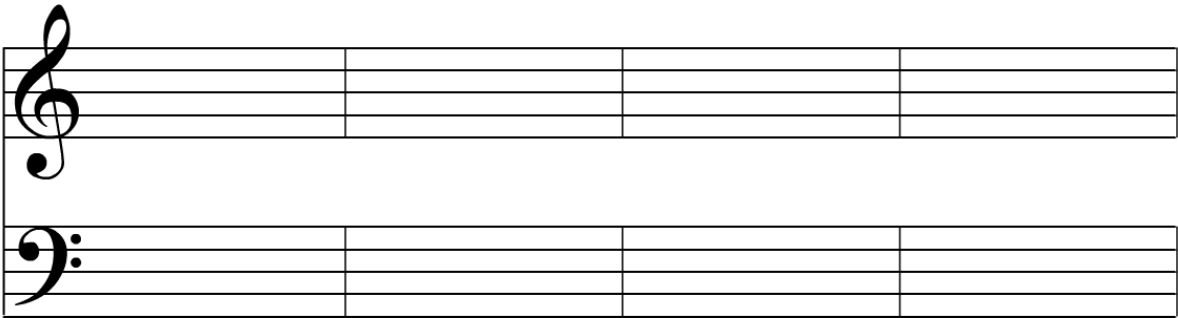
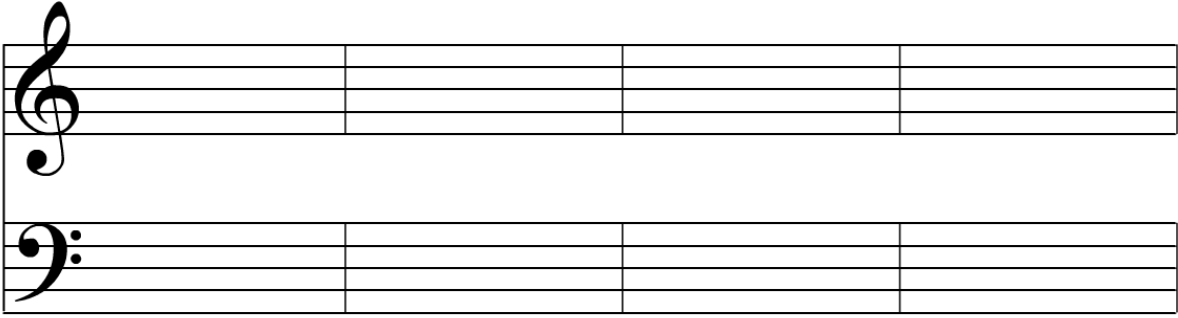
| | | | |
|--|--|--|--|
| | | | |
| | | | |
| | | | |
| | | | |

Dictation Template

Single Melody Dictation







A musical staff system consisting of two staves. The top staff is a treble clef and the bottom staff is a bass clef. Both staves are divided into four measures by vertical bar lines.

A musical staff system consisting of two staves. The top staff is a treble clef and the bottom staff is a bass clef. Both staves are divided into four measures by vertical bar lines.

A musical staff system consisting of two staves. The top staff is a treble clef and the bottom staff is a bass clef. Both staves are divided into four measures by vertical bar lines.

A musical staff system consisting of two staves. The top staff is a treble clef and the bottom staff is a bass clef. Both staves are divided into four measures by vertical bar lines.

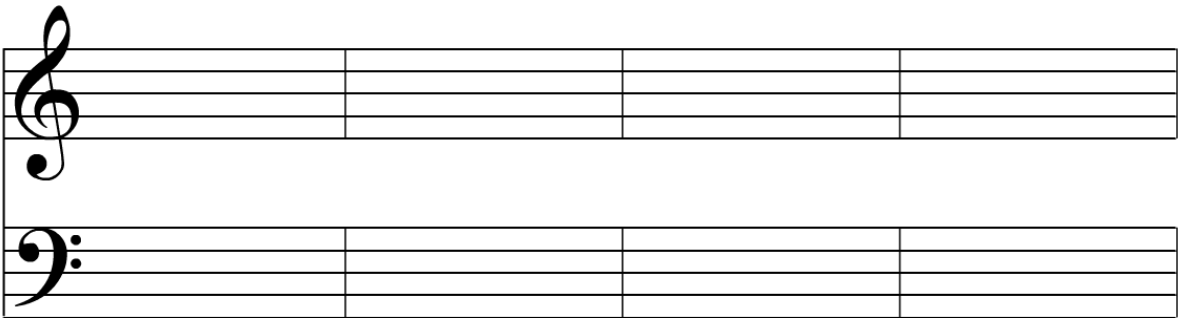
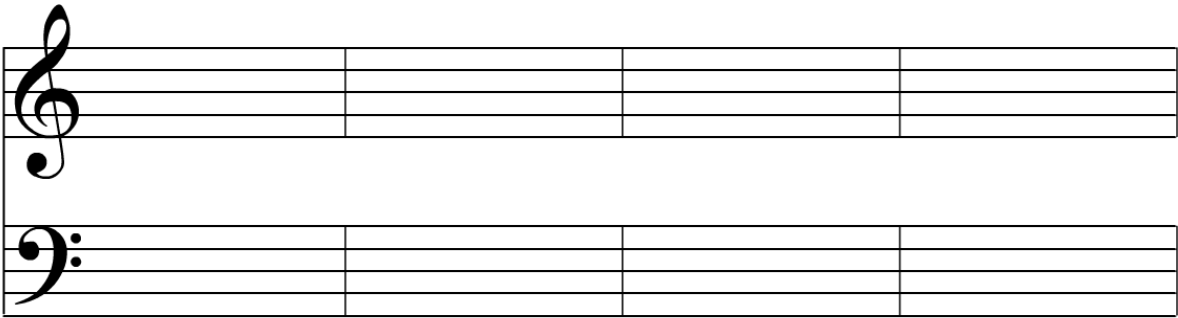
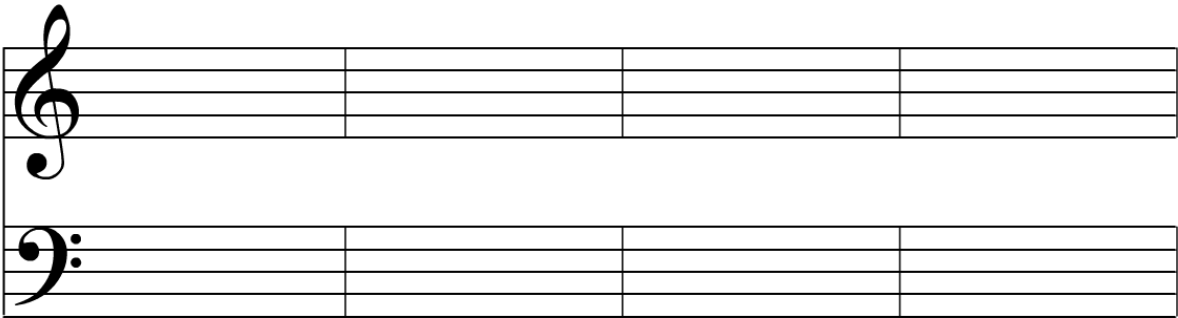
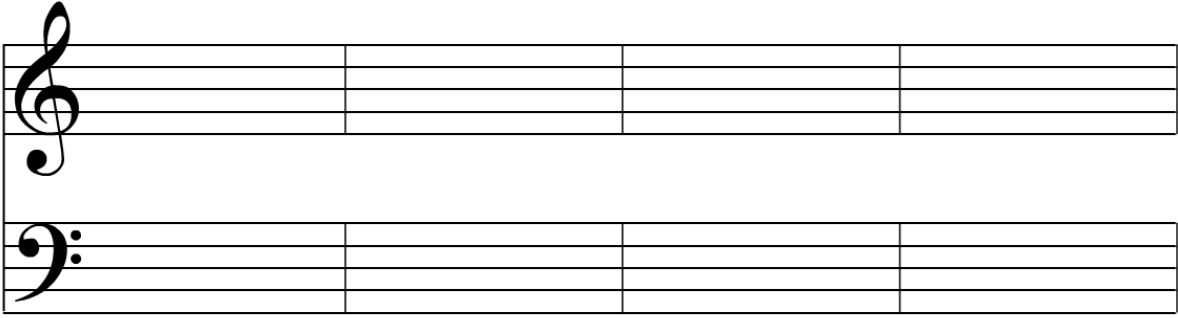
A musical staff system consisting of two staves. The top staff is a treble clef and the bottom staff is a bass clef. Both staves are divided into four measures by vertical bar lines.

A musical staff system consisting of two staves. The top staff is a treble clef and the bottom staff is a bass clef. Both staves are divided into four measures by vertical bar lines.



A musical staff system consisting of two staves. The top staff is a treble clef and the bottom staff is a bass clef. Both staves are divided into four measures by vertical bar lines.

A musical staff system consisting of two staves. The top staff is a treble clef and the bottom staff is a bass clef. Both staves are divided into four measures by vertical bar lines.



A musical staff system consisting of two staves. The top staff is a treble clef and the bottom staff is a bass clef. Both staves are divided into four measures by vertical bar lines. The staves are empty.

A musical staff system consisting of two staves. The top staff is a treble clef and the bottom staff is a bass clef. Both staves are divided into four measures by vertical bar lines. The staves are empty.

A musical staff system consisting of two staves. The top staff is a treble clef and the bottom staff is a bass clef. Both staves are divided into four measures by vertical bar lines. The staves are empty.

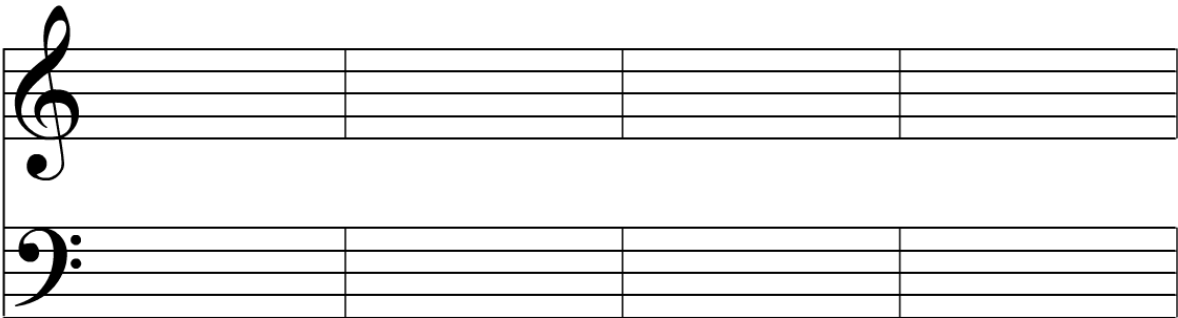
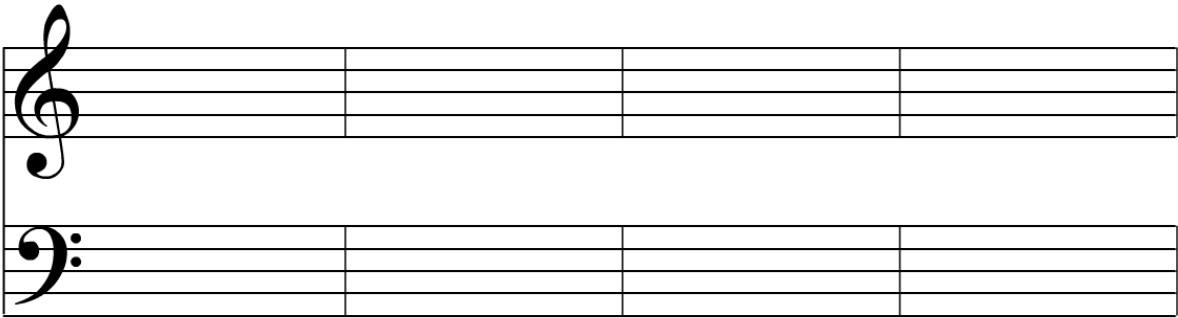
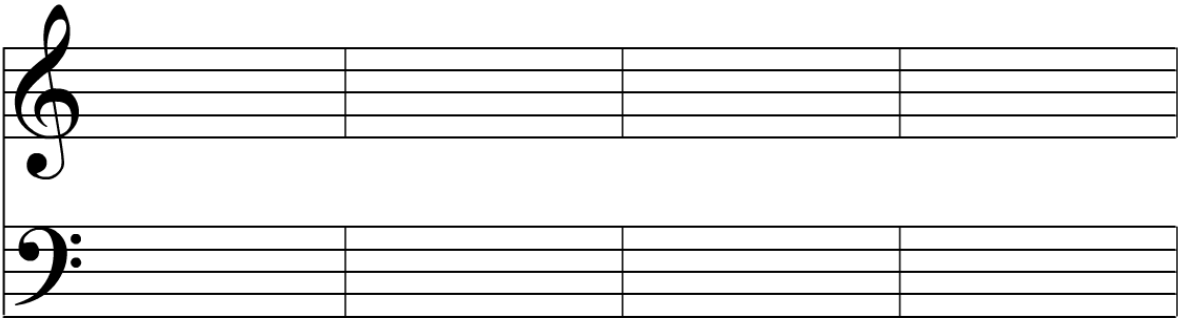
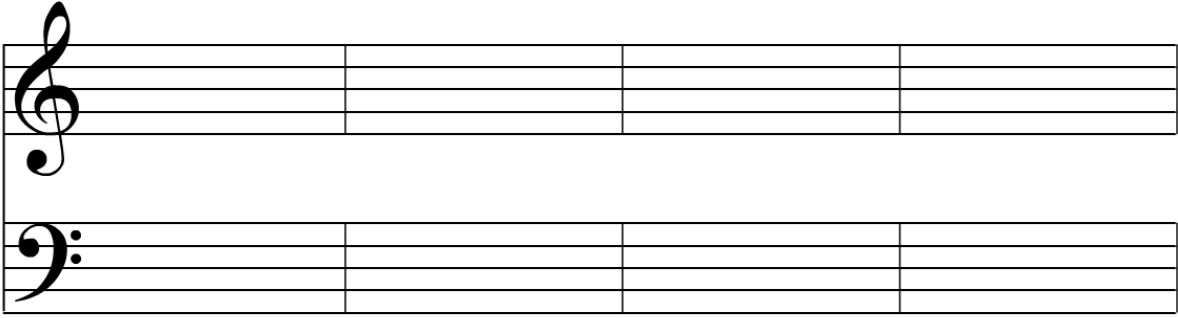
A musical staff system consisting of two staves. The top staff is a treble clef and the bottom staff is a bass clef. Both staves are divided into four measures by vertical bar lines. The staves are empty.

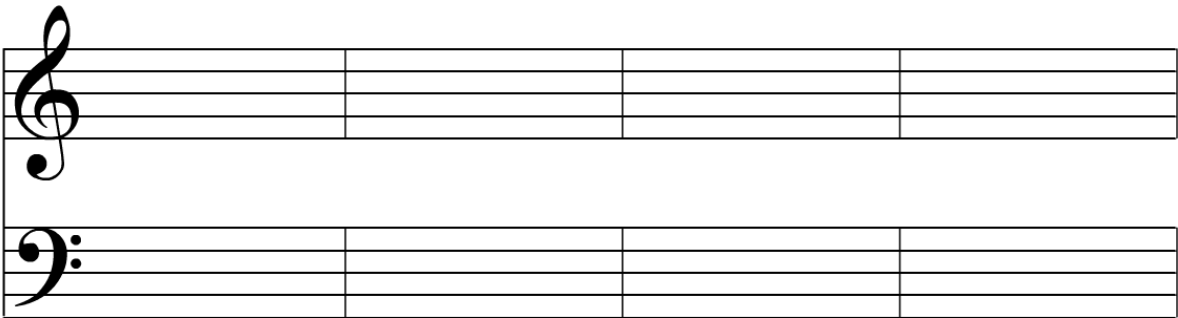
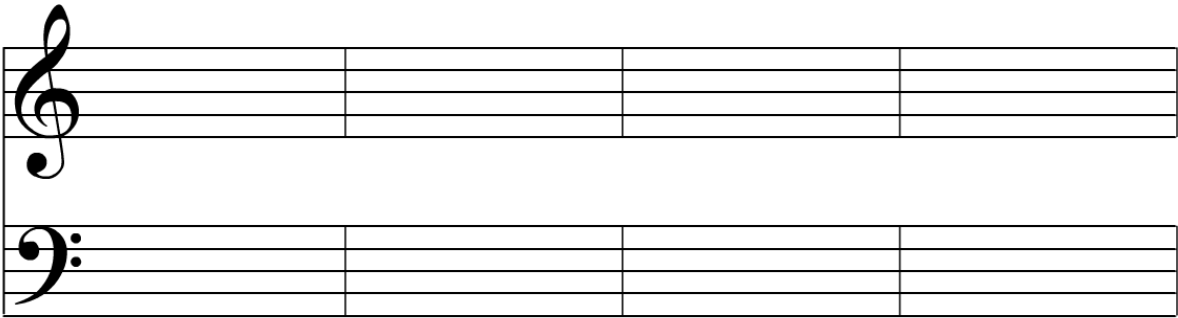
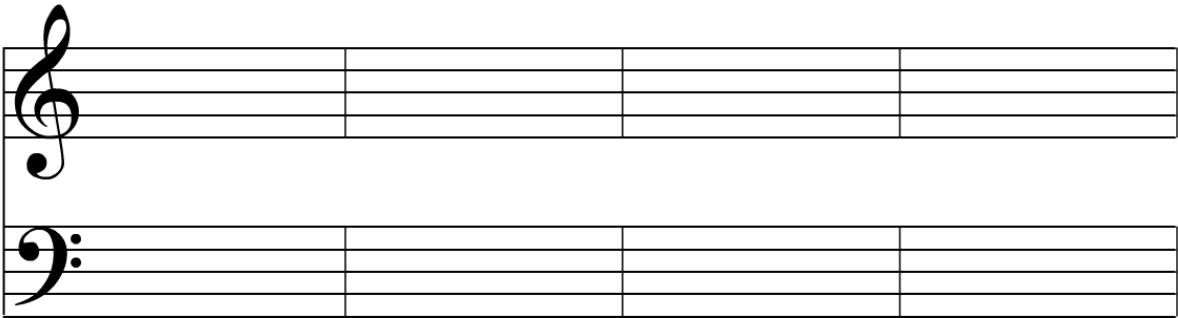
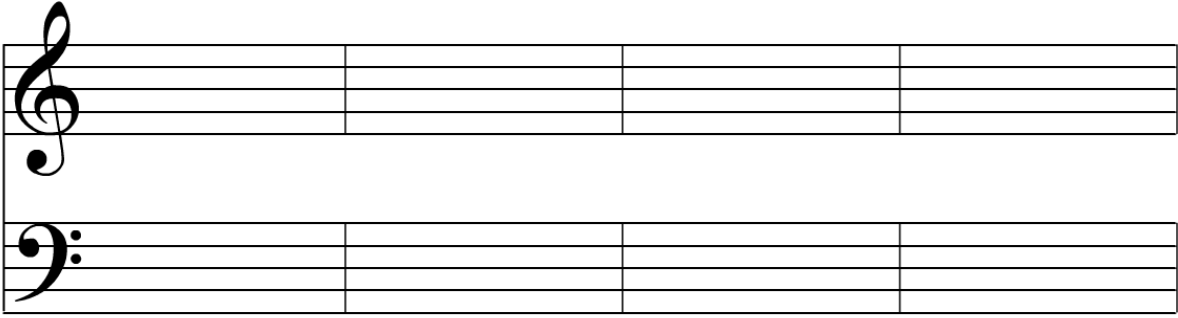
A musical staff system consisting of two staves. The top staff is a treble clef and the bottom staff is a bass clef. Both staves are divided into four measures by vertical bar lines.

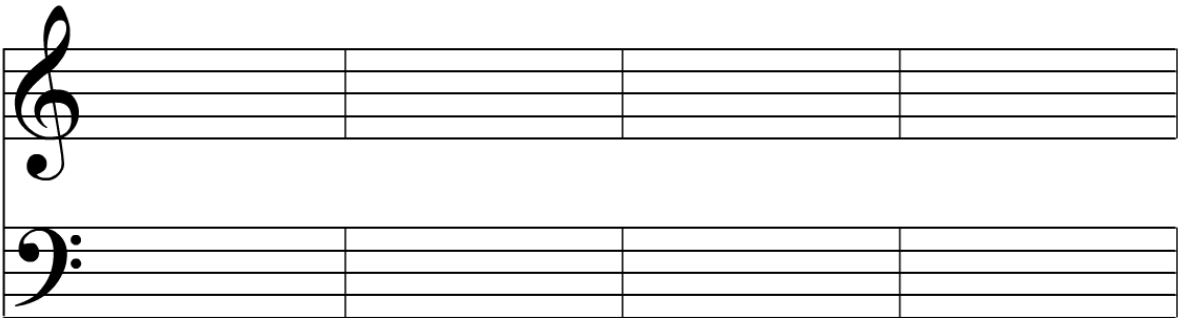
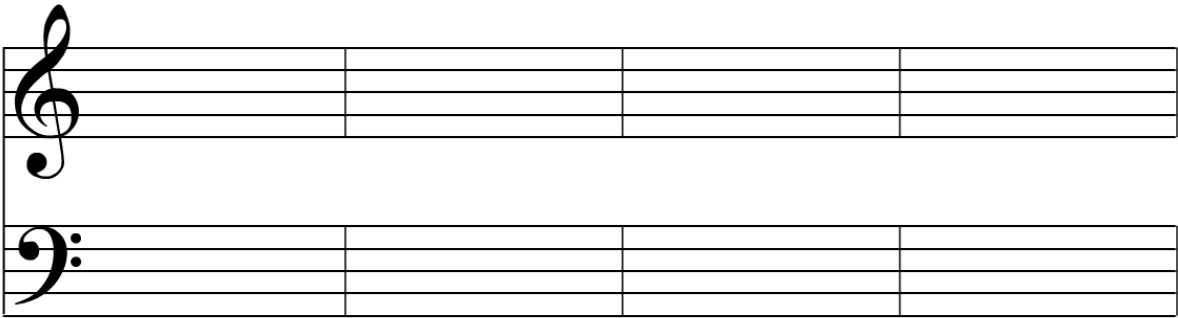
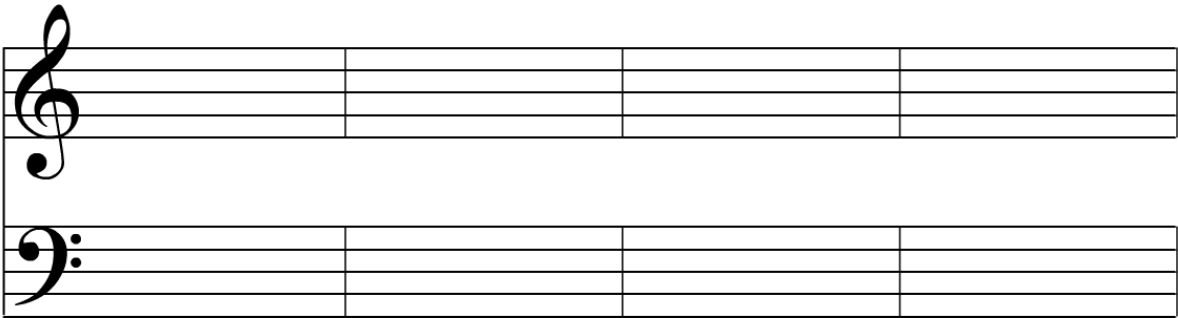
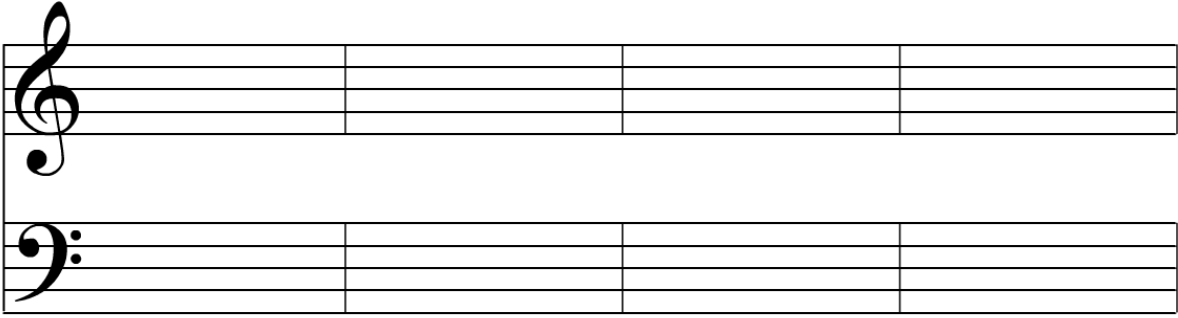
A musical staff system consisting of two staves. The top staff is a treble clef and the bottom staff is a bass clef. Both staves are divided into four measures by vertical bar lines.

A musical staff system consisting of two staves. The top staff is a treble clef and the bottom staff is a bass clef. Both staves are divided into four measures by vertical bar lines.

A musical staff system consisting of two staves. The top staff is a treble clef and the bottom staff is a bass clef. Both staves are divided into four measures by vertical bar lines.

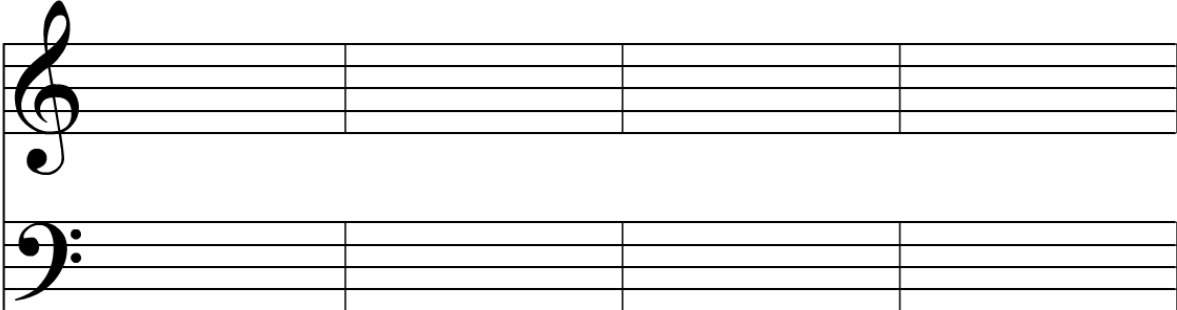


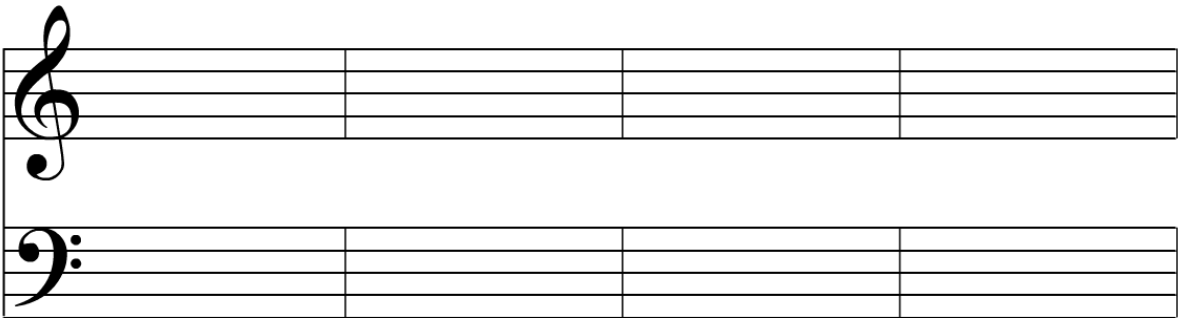
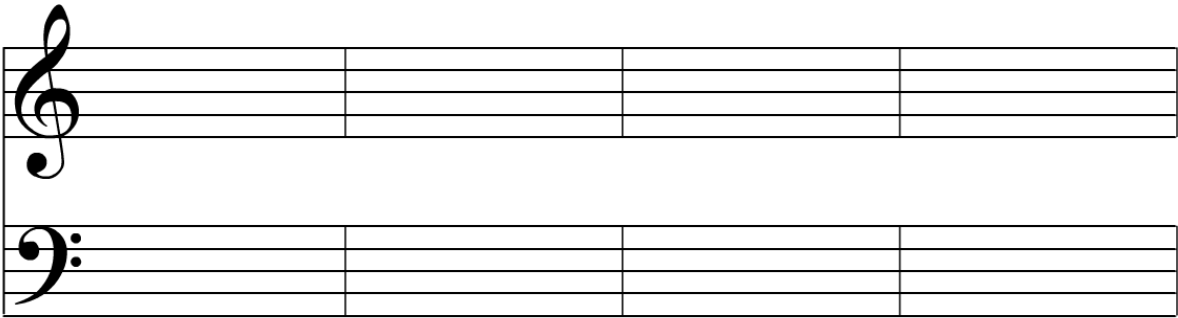
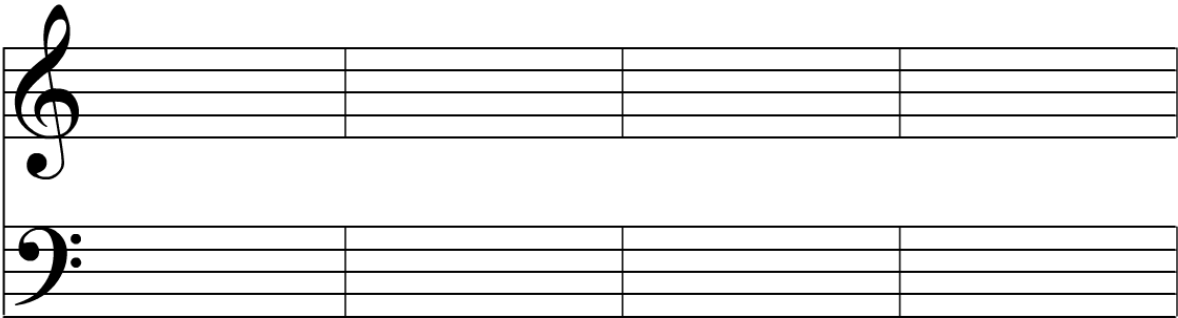
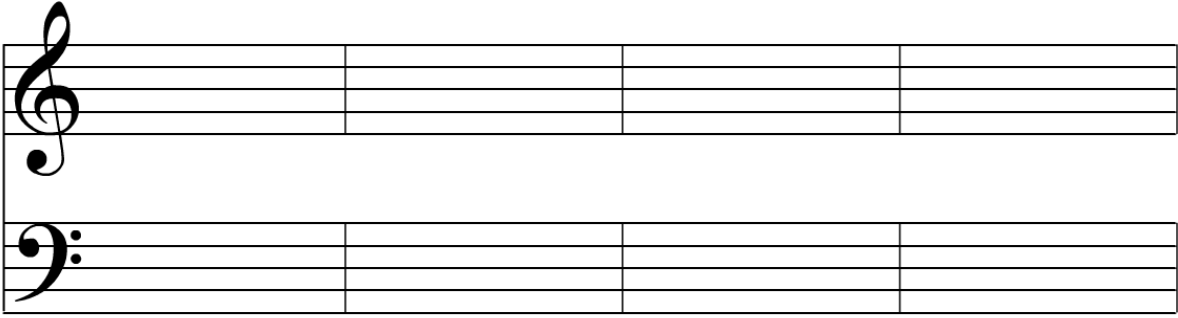


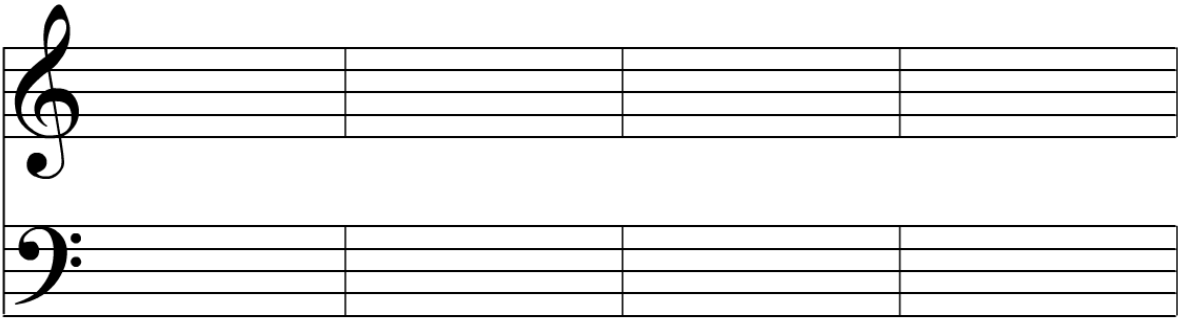
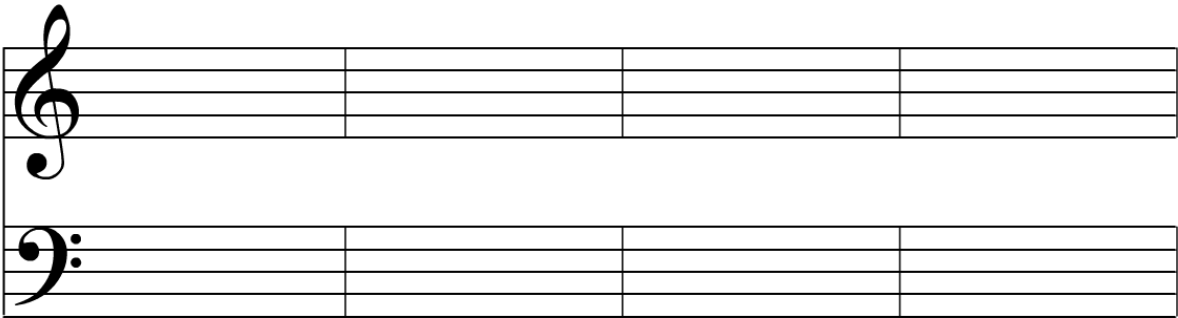
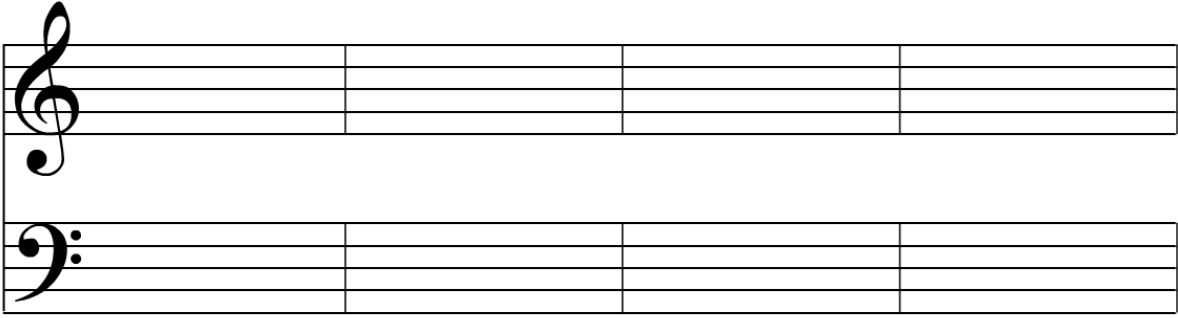


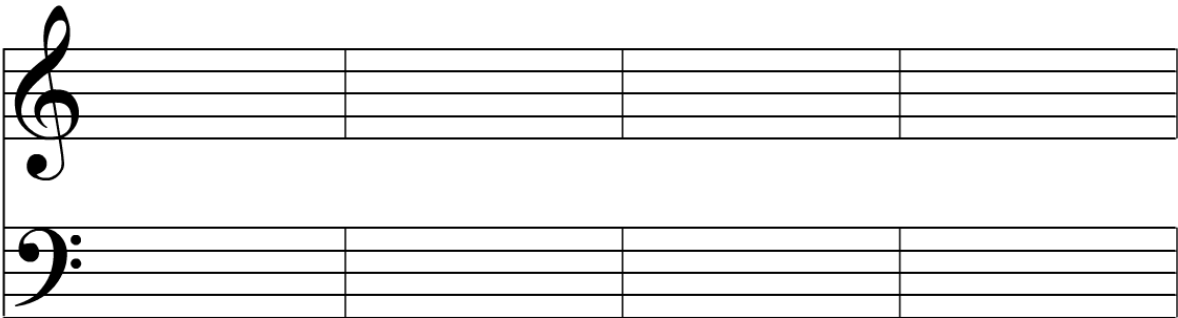
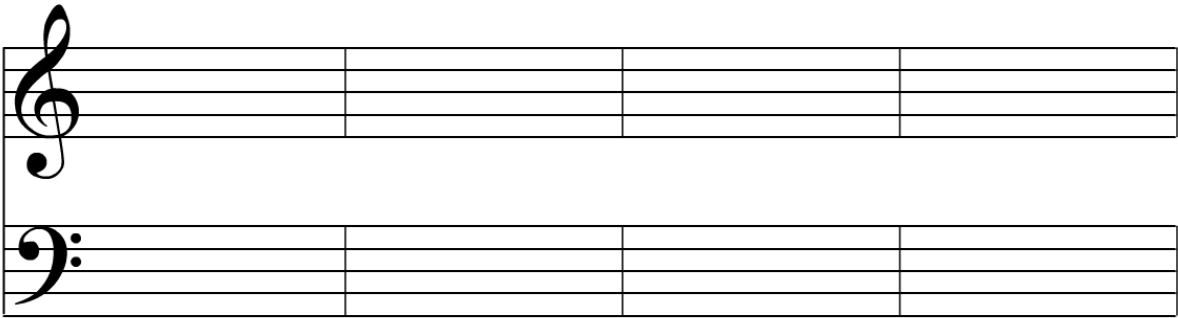
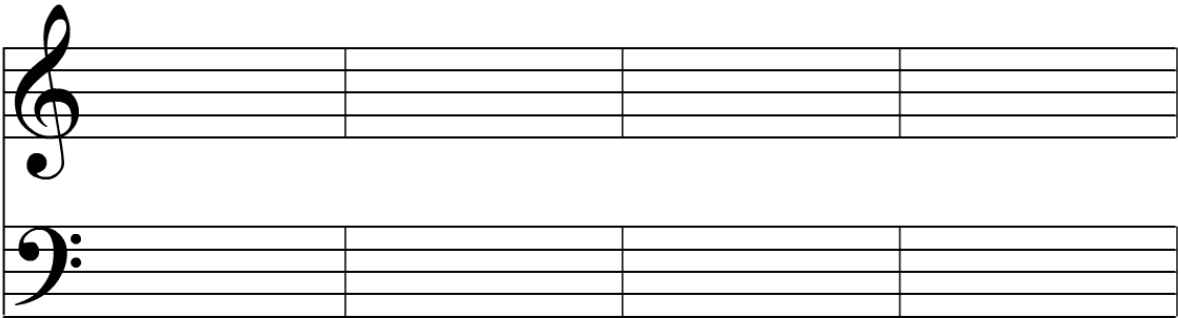
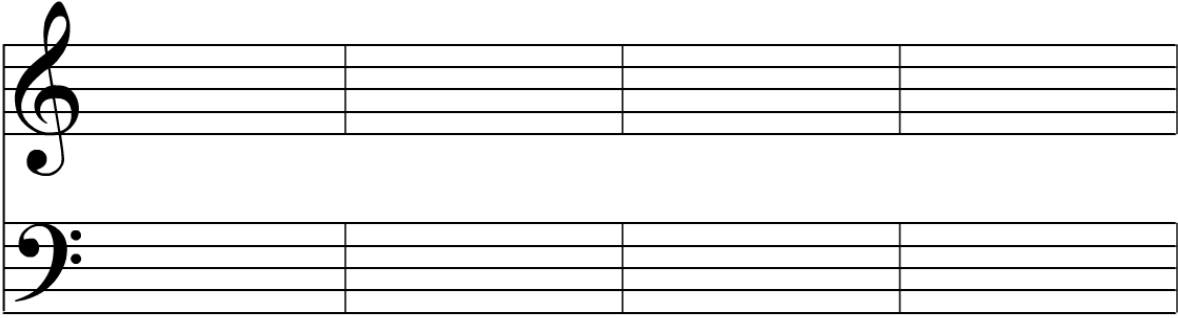
Dictation Template

Two Part Dictation







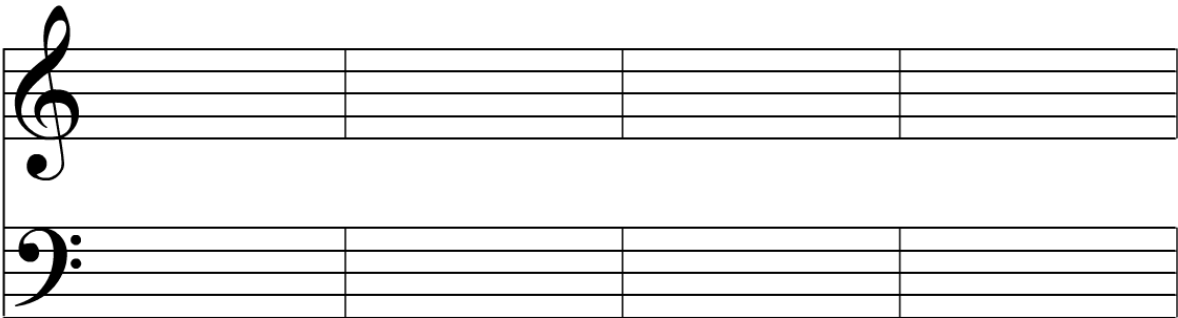
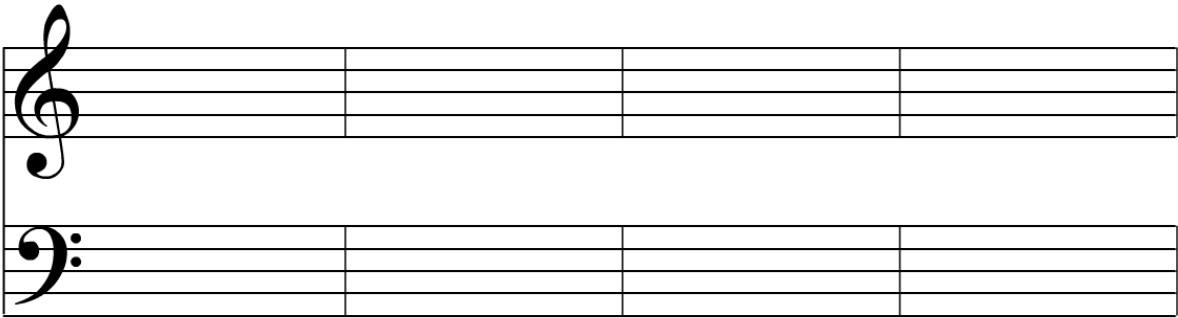
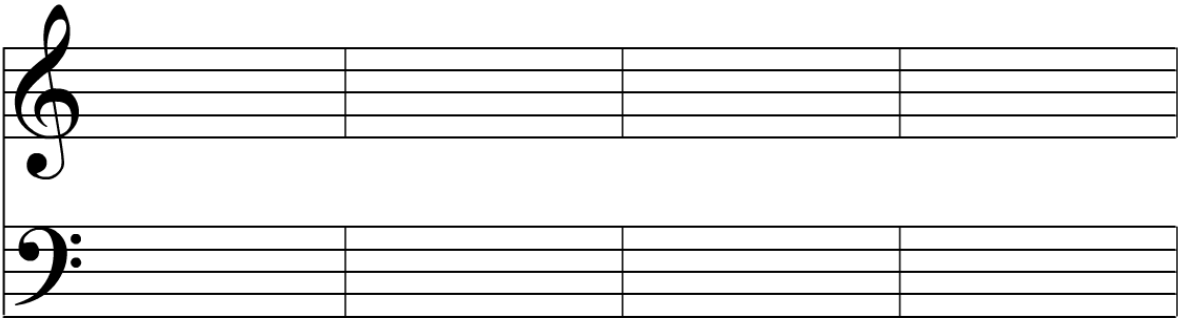
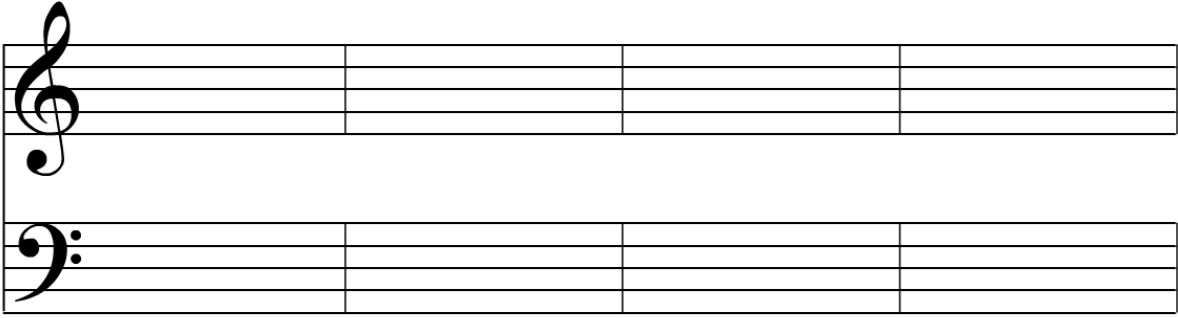


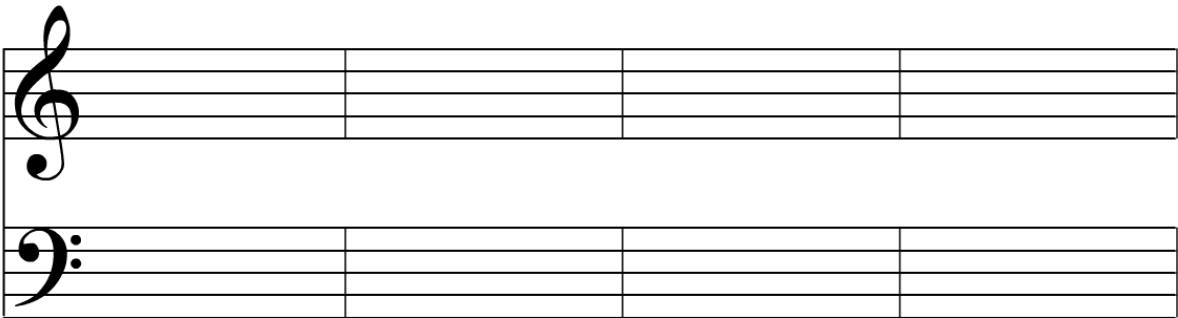
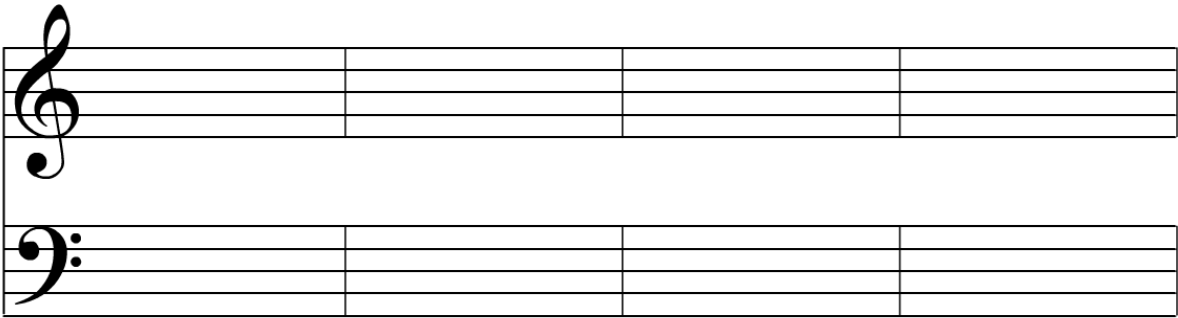
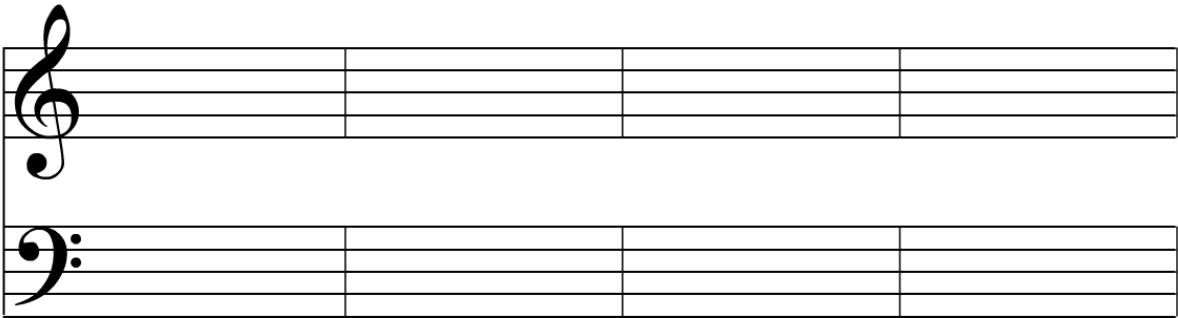
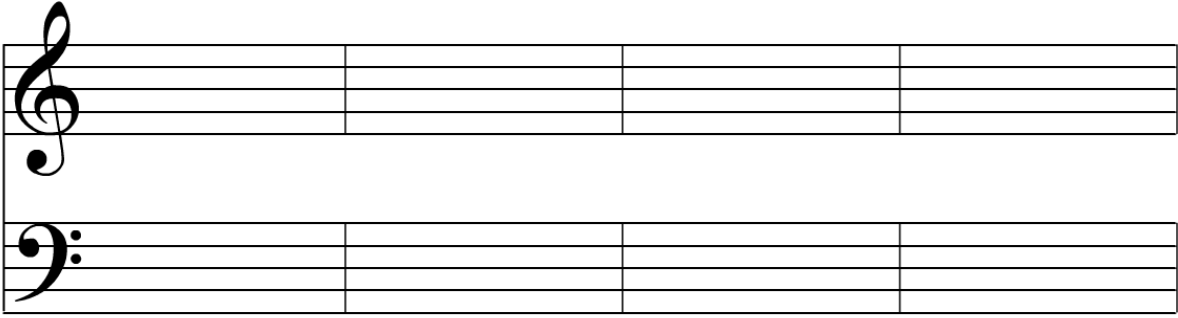
A musical staff system consisting of two staves. The top staff is a treble clef and the bottom staff is a bass clef. Both staves are divided into four measures by vertical bar lines. The staves are empty.

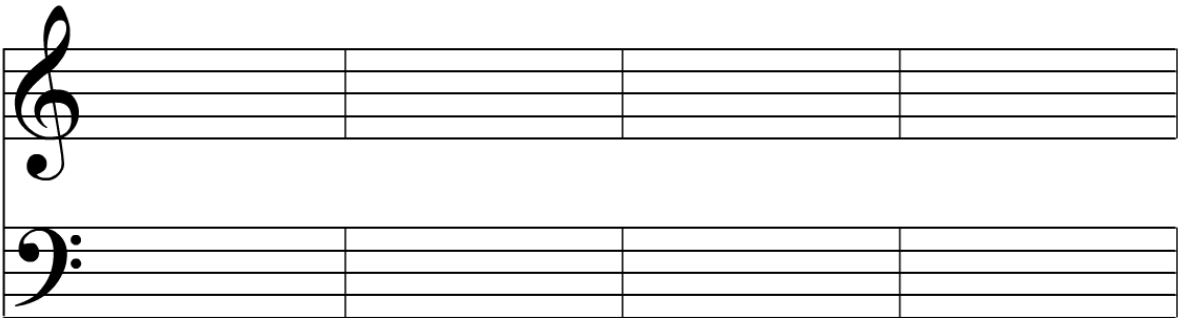
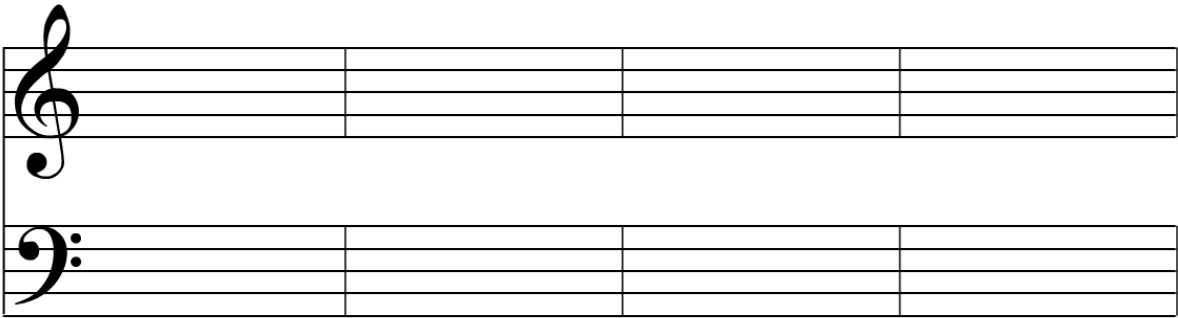
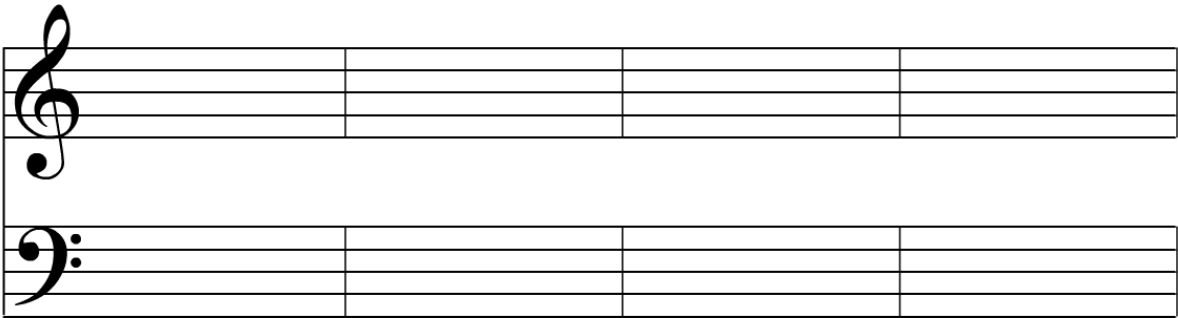
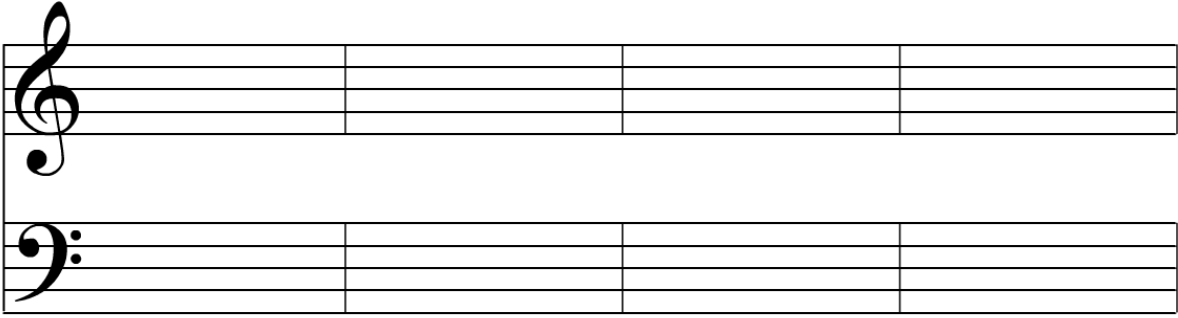
A musical staff system consisting of two staves. The top staff is a treble clef and the bottom staff is a bass clef. Both staves are divided into four measures by vertical bar lines. The staves are empty.

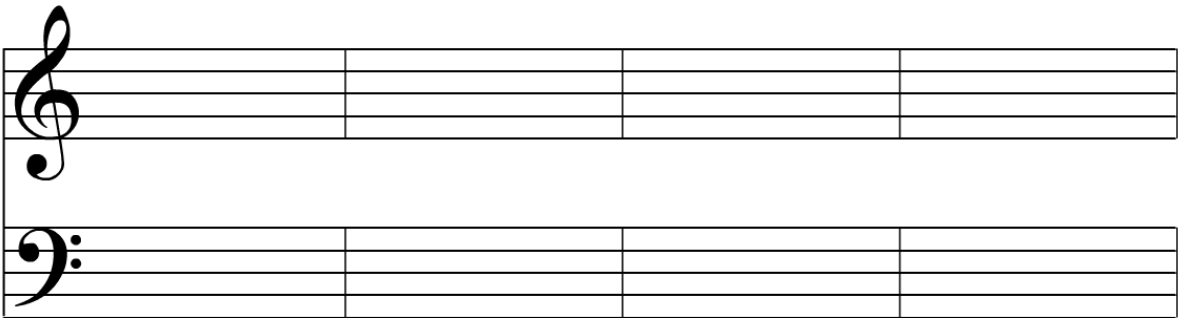
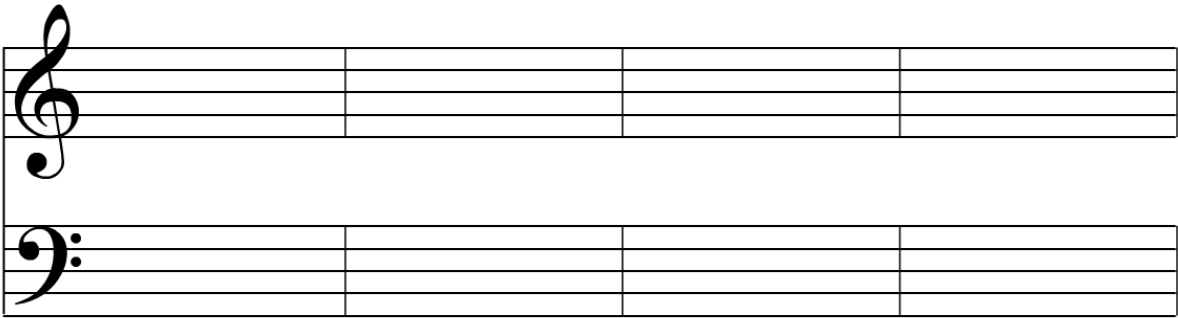
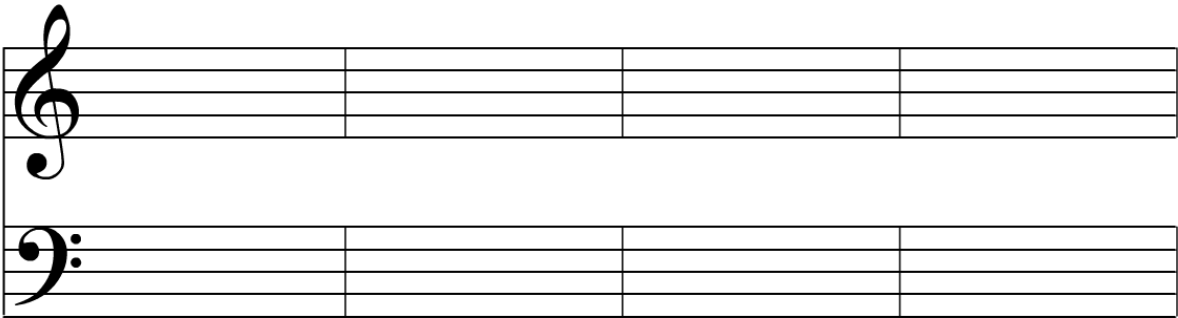
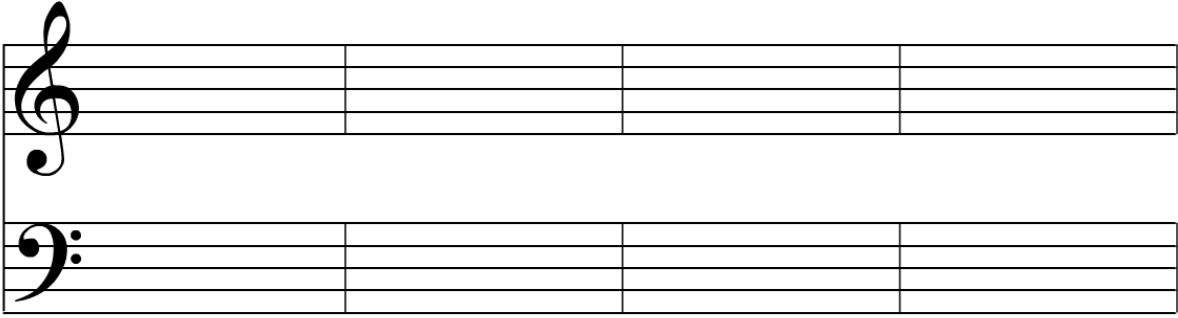
A musical staff system consisting of two staves. The top staff is a treble clef and the bottom staff is a bass clef. Both staves are divided into four measures by vertical bar lines. The staves are empty.

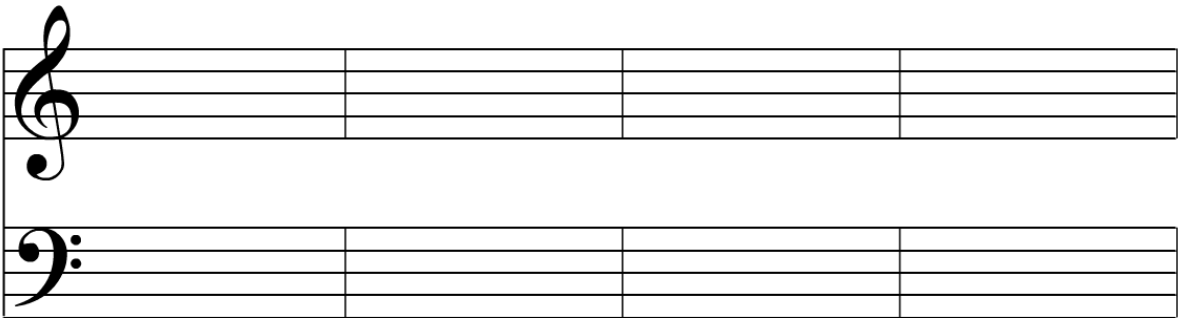
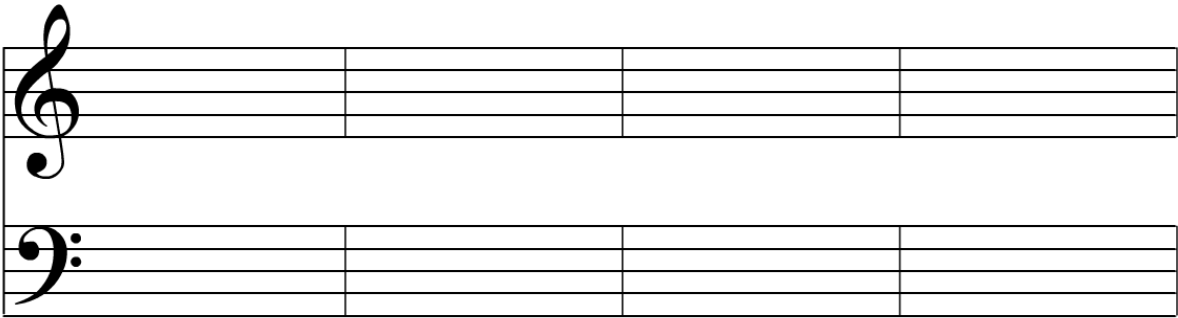
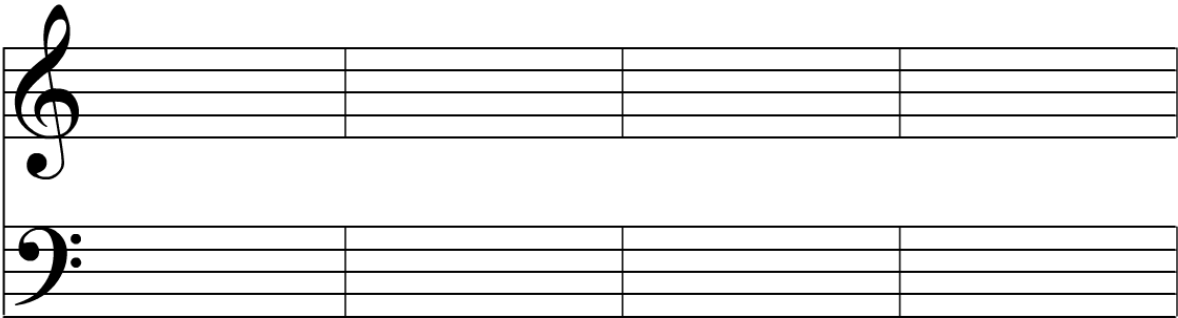
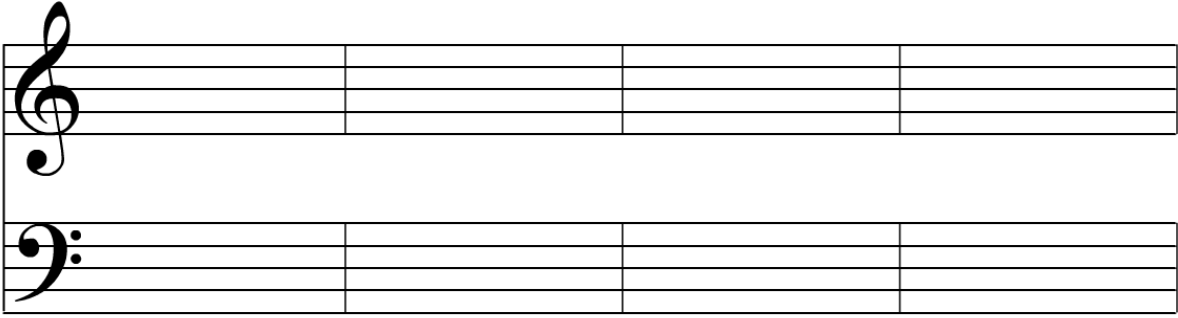
A musical staff system consisting of two staves. The top staff is a treble clef and the bottom staff is a bass clef. Both staves are divided into four measures by vertical bar lines. The staves are empty.

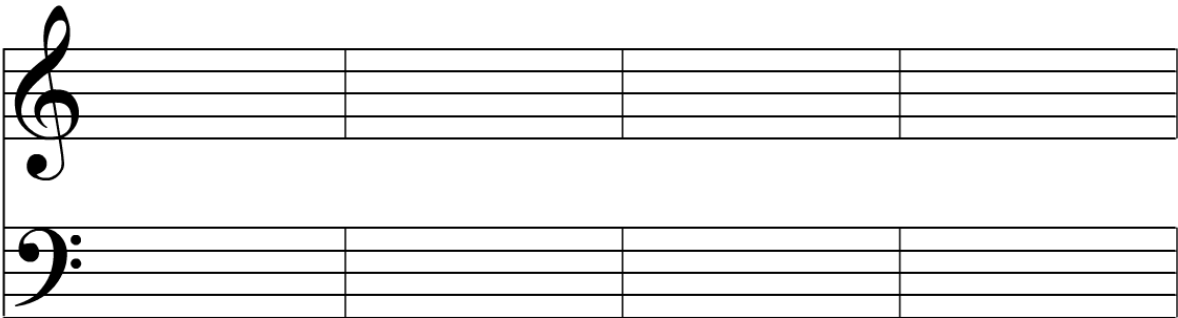
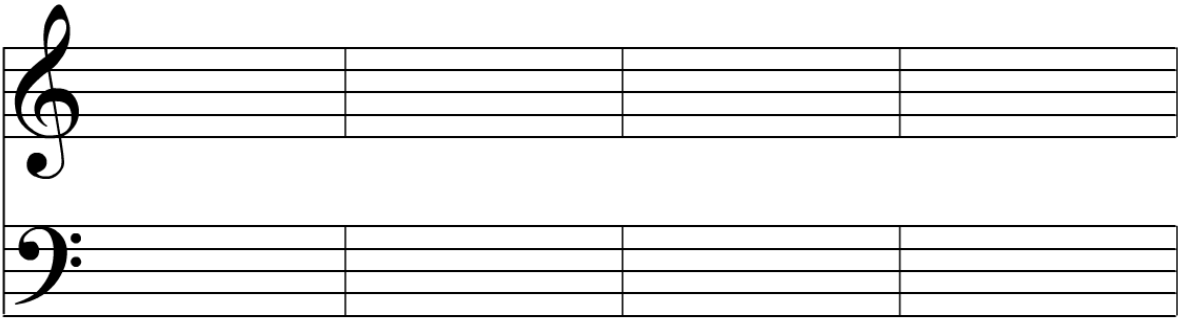
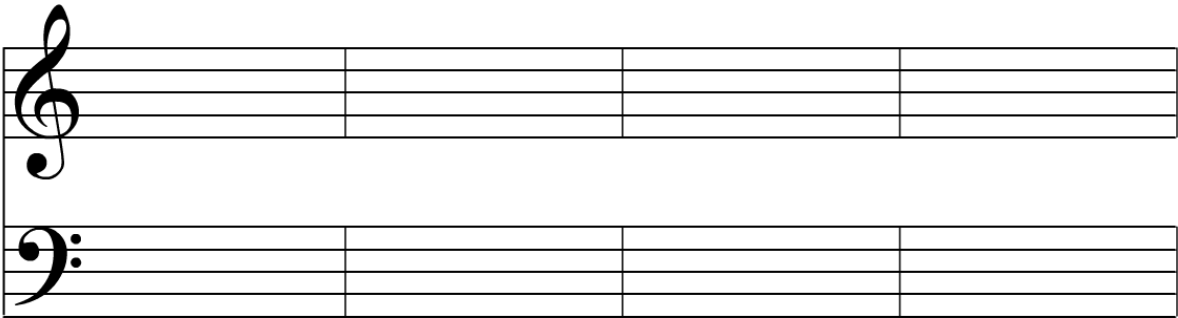
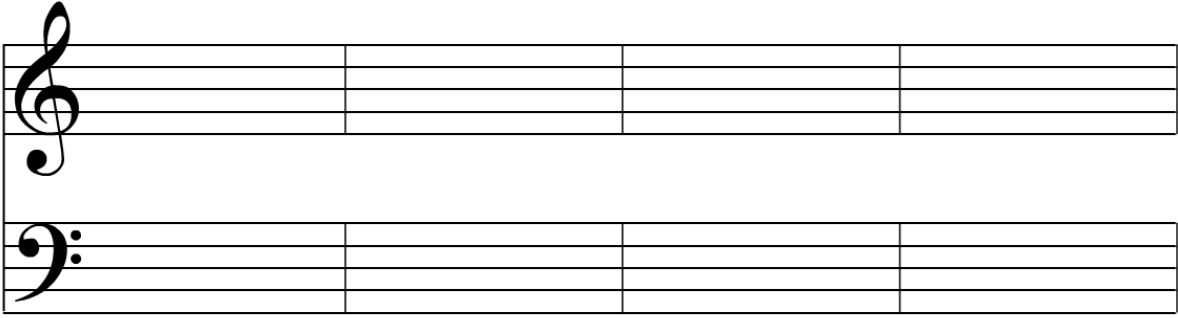












Dictation Template

Four Part Dictation


A musical dictation template consisting of four horizontal staves. Each staff is a five-line system. The staves are labeled on the left side with a large curly bracket grouping them. From top to bottom, the labels are: Soprano, Alto, Tenor, and Bass. Each staff is currently empty, providing space for musical notation.

Soprano

Alto

Tenor

Bass



Soprano

Alto

Tenor

Bass

A musical staff system consisting of four staves. The top staff is labeled 'Soprano', the second 'Alto', the third 'Tenor', and the bottom 'Bass'. A large curly brace on the left side groups all four staves together.An empty musical staff system consisting of four staves, grouped by a large curly brace on the left side.An empty musical staff system consisting of four staves, grouped by a large curly brace on the left side.

Soprano

Alto

Tenor

Bass

A musical staff system consisting of four staves. The top staff is labeled 'Soprano', the second 'Alto', the third 'Tenor', and the fourth 'Bass'. A large curly brace on the left side groups all four staves together.

An empty musical staff system consisting of four staves, grouped by a large curly brace on the left side.

An empty musical staff system consisting of four staves, grouped by a large curly brace on the left side.

Soprano

Alto

Tenor

Bass



This block contains a musical staff system with four staves. The staves are labeled from top to bottom as Soprano, Alto, Tenor, and Bass. Each staff is a five-line musical staff, and the entire system is enclosed in a large left-facing curly bracket.



This block contains an empty musical staff system with four staves, enclosed in a large left-facing curly bracket. It is identical in layout to the first system but contains no text or musical notation.



This block contains a second empty musical staff system with four staves, enclosed in a large left-facing curly bracket. It is identical in layout to the previous two systems but contains no text or musical notation.

Soprano

Alto

Tenor

Bass

A musical staff system consisting of four staves. The top staff is labeled 'Soprano', the second 'Alto', the third 'Tenor', and the fourth 'Bass'. Each staff is a five-line system. A large curly brace on the left side groups all four staves together.An empty musical staff system consisting of four staves. A large curly brace on the left side groups all four staves together.An empty musical staff system consisting of four staves. A large curly brace on the left side groups all four staves together.

Soprano

Alto

Tenor

Bass



This block contains four blank musical staves, each consisting of five horizontal lines. The staves are grouped together by a large curly brace on the left side. The labels 'Soprano', 'Alto', 'Tenor', and 'Bass' are positioned to the left of the staves, corresponding to each staff from top to bottom.



This block contains four blank musical staves, each consisting of five horizontal lines. The staves are grouped together by a large curly brace on the left side.



This block contains four blank musical staves, each consisting of five horizontal lines. The staves are grouped together by a large curly brace on the left side.

Soprano

Alto

Tenor

Bass

A musical staff system consisting of four staves. The top staff is labeled 'Soprano', the second 'Alto', the third 'Tenor', and the bottom 'Bass'. A large curly brace on the left side groups all four staves together.

An empty musical staff system consisting of four staves, identical in layout to the first system above.

An empty musical staff system consisting of four staves, identical in layout to the first system above.

Soprano

Alto

Tenor

Bass


A musical staff system consisting of four staves. The top staff is labeled 'Soprano', the second 'Alto', the third 'Tenor', and the bottom 'Bass'. A large curly brace on the left side groups all four staves together.An empty musical staff system consisting of four staves, grouped by a large curly brace on the left side.An empty musical staff system consisting of four staves, grouped by a large curly brace on the left side.

Soprano

Alto

Tenor

Bass

A musical staff system consisting of four staves, labeled Soprano, Alto, Tenor, and Bass from top to bottom. Each staff is a five-line staff. The labels are positioned to the left of the staves, with a large curly brace on the left side of the system encompassing all four staves.An empty musical staff system consisting of four staves, identical in layout to the first system. A large curly brace is on the left side of the system, but no labels are present.A second empty musical staff system, identical in layout to the previous two systems. It consists of four staves with a large curly brace on the left side and no labels.

Soprano

Alto

Tenor

Bass



A musical staff system consisting of four staves. The top staff is labeled 'Soprano', the second 'Alto', the third 'Tenor', and the bottom 'Bass'. A large curly brace on the left side groups all four staves together.



An empty musical staff system consisting of four staves, grouped by a large curly brace on the left side.



An empty musical staff system consisting of four staves, grouped by a large curly brace on the left side.